



CopyKats
Copy & Print Centre
1-877-781-6607
5008 - 51 Ave Wetaskiwin, AB T9A 0V1
www.copykats.ca

L A B E L S

endless applications

Quick  Easy

P R O D U C T C A T A L O G U E

QE Label Features

Size

Roll width is 8" on all stocks.
Repeat length is up to 27".
Can be one shape or multiple different shapes.



Ink

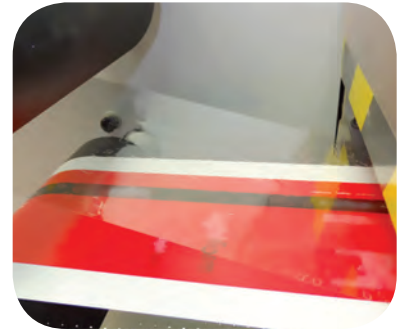
Digital toner provides vibrant full colour and UV protection resists fading. One colour, up to four colour, plus **white ink** available to enhance your images.

Variable

Consecutive Numbering,
Consecutive or static
Barcodes, QR codes and
UPC - set up and printing
available in black ink. Variable
information available for mail
applications.

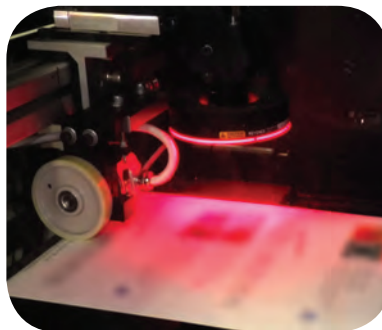
Laminate

Gloss or Matte laminates are
Polyester based stock for
durability, scratch protection
and are UV coated for fade
resistance.
UV varnish also available in
Matte and Gloss.



Laser Die Cutting

Laser die cutting makes ordinary
EXTRAORDINARY!
Any shape die cut **NO EXTRA
COST** with dieline art supplied.



Press Proofs

Press proofs or a press/die cut
proof are available for a small up
charge. We press proof all Prime
labels (labels that act as the
main identification of a product;
food products, pharmaceuticals,
etc) for your satisfaction.

Roll Format


Labels are produced in roll
format. 3" cardboard cores
available. Select the number of
labels you would like on a roll
or we ship best fit per roll.
Also Available: Perf between
every label.

Sheet Format

Off line Sheeter can cut labels
to an individual size or sheet
length. Minimum size is 2"x 2".
Your choice of 1 per sheet or
multiple.





Labels are everywhere  Let us help you with some application ideas!

Grocery



Gloss Freezer



Gloss Permanent



Matte Water Removable

Special adhesive for freezer environment

Retail



Gloss Removable



Poly Security Permanent



Silver Dull Permanent

Doesn't leave glue residue

Draw attention with silver stock

Magenta indicates dieline possibilities



Construction & Automotive

Labels are everywhere



Let us help you with some application ideas!

Automotive



Bright Silver



Poly Permanent



Clear Ultra Removable

Weather resistant

Construction



Fluorescent



Poly Supertac



Gloss Permanent

Laminate for extra protection

Shipping & Window Application

Labels are everywhere



Let us help you with some application ideas!

Shipping

9283 Christina Court,
Edmonton,
Alberta
T8H-2H9

Matte Block Out



Fluorescent-Laminate



Thermal Transfer

▲
Cover old info with block out stock

Window Application



Clear Ultra Removable

21 3 74 35 7 27 18
SOLD HERE

White Gloss Removable



Bright Silver

▲
Use white ink for opaque appearance

Magenta indicates dieline possibilities

Corporate Identity & Cosmetic

Labels are everywhere

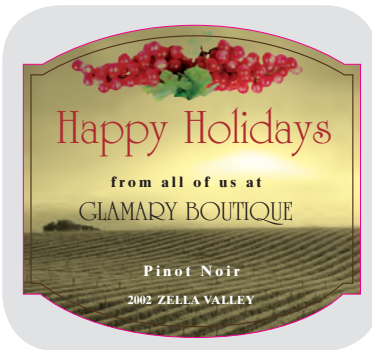


Let us help you with some application ideas!

Corporate Identity



Silver Iridescent



Semi Gloss Permanent



Clear Ultra Removable

Add pizzazz

Cosmetic



Silver Dull



Clear Permanent



Poly Conformable

Make your product stand out

Magenta indicates dieline possibilities

How to Order?

1. Stock options

White: Matte - Semi Gloss - Gloss - Poly • Metallic: Bright Silver - Dull Silver - Iridescent Silver
Fluorescents: Yellow - Orange - Red - Pink - Green • Clear

2. Adhesive options

Permanent • Removable • Ultra Removable • Freezer • Water Removable

3. Pick a size & shape

Measure image left to right, and top to bottom. Every shape is a standard shape, there are no die charges!

4. Choose ink colour

You choose the colours, including white opaque. Every colour is a standard colour!
1 colour, 2 colour, full digital colour, white ink.

5. Send in your file

PDF or EPS files. Supply in vector format when possible.
Include a magenta outline for die shape.

	Matte	Beverage	Thermal	Semi Gloss	Gloss	Poly	Poly Conformable	Security	Clear	Metallic	Iridescent	Fluorescent
Features												
Writeable	✓	✓	✓	✓								✓
Permanent Adhesive	✓	✓	✓	✓	✓	✓	✓	✓	✓	✓	✓	✓
Removable Adhesive	✓				✓				✓			
Ultra Removable Adhesive									✓			
Poly Supertac						✓						
UV Resistant	✓	✓	✓	✓	✓	✓	✓	✓	✓	✓	✓	✓
Moisture Resistant		✓		✓	✓	✓	✓	✓	✓	✓	✓	
Water Proof					✓	✓	✓	✓	✓	✓		
Weather Resistant					✓	✓	✓	✓	✓	✓		
Freezer Adhesive					✓							
Block Out	✓*											
Water Removable		✓										
Surface Application												
Glass	✓	✓	✓	✓	✓	✓	✓	✓	✓	✓	✓	✓
Plastic	✓	✓	✓	✓	✓	✓	✓	✓	✓	✓	✓	✓
Metal	✓	✓	✓	✓	✓	✓	✓	✓	✓	✓	✓	✓
Paper/Cardboard	✓	✓	✓	✓	✓	✓	✓	✓	✓	✓	✓	✓

* **Matte Block Out** is available on permanent adhesive only.

Request for Quote / Order

Stock

WHITE MATTE

Permanent*, removable,
or water removable adhesive**

Indoor usage

40lb Paper based label

Can be typed or written on

Water removable is perfect for
Beverage/Wine label

*Matte Block Out is available on
permanent adhesive only

**Label is removable when sub-
mersed in 37°C water

THERMAL TRANSFER

Permanent adhesive

For use in Thermal transfer printers

60lb Paper based label

Compatible with laser printers such
as Zebra, Sabo, etc

WHITE GLOSS

Hi Gloss finish

Permanent, removable or
freezer adhesive

Indoor / outdoor usage

Superior ink quality

40lb Polypropylene based label

WHITE POLY

Hi Gloss finish

Permanent adhesive-Regular or
Supertac

Poly Security in Tamper Resistant
Format

Indoor / outdoor usage

Great for outdoor use

50lb Polyester based label

POLY CONFORMABLE

Permanent adhesive

Flexible for contoured surfaces

Indoor / outdoor usage

Excellent for plastic or glass
packaging

50lb Polyolefin based label

CLEAR

Permanent, removable or

ultra removable adhesive

Indoor / outdoor usage

Great for glass applications

METALLIC

Bright/Dull Silver

Permanent adhesive

Indoor / outdoor usage

Excellent for HVAC

IRIDESCENT SILVER

Permanent adhesive

Indoor usage

Paper based

Holographic visual effect

FLUORESCENT

Yellow/Orange/Red/Pink/Green

Matte finish

Can be typed or written on

Excellent for high visual areas

40lb Paper based label

Date _____ ☐ Quote ☐ Exact Repeat ☐ Change Repeat **L** _____
(Docket #)

Ship to:

Name	Ph.	Contact
Address	City	Prov. P.C.

Label Type: ☐ Roll ☐ Sheeted



Qty _____ Label size **W** x **L**

Stock _____ Adhesive ☐ Permanent ☐ Removable ☐ Freezer
☐ Ultra Removable ☐ Water Removable

Applied to _____ Ink Colours ☐ One ☐ Two ☐ CMYK ☐ + White Opaque

Bleeds ☐ Yes ☐ No Laminated ☐ Matte ☐ Gloss Varnished ☐ Matte ☐ Gloss

Shape ☐ ☐ ☐ ☐ ☐ ☐ Any Shape Matrix (waste) removed ☐ Yes ☐ No

Sheet Labels: # labels/sheet _____ Roll Labels: # labels/roll _____ ☐ Best fit
Min. size 2"x 2"

of labels to view _____ Perf'd between labels ☐ Yes ☐ No

of dispenser boxes **1 Box included** 3" Core Required ☐ Yes ☐ No

☐ Numbering ☐ Barcode ☐ UPC ☐ QR ☐ Variable Type
_____ & up

Label Applied by ☐ Hand ☐ Machine (if applied by machine Unwind direction is mandatory)

Unwind Direction ☐ Top first ☐ Bottom first ☐ Right first ☐ Left first ☐ Best fit

Art Required

☐ Yes ☐ No Format* _____ Die line supplied ☐ Yes ☐ No (Charges apply)
* PDF or EPS files. Supply in vector format when possible

Proof

☐ Yes ☐ No ☐ Email _____ ☐ Hard Copy
E-mail address

☐ Press (Charges apply)

**All prime labels (retail product labels) require a press proof.
Please advise if this is a prime label.**